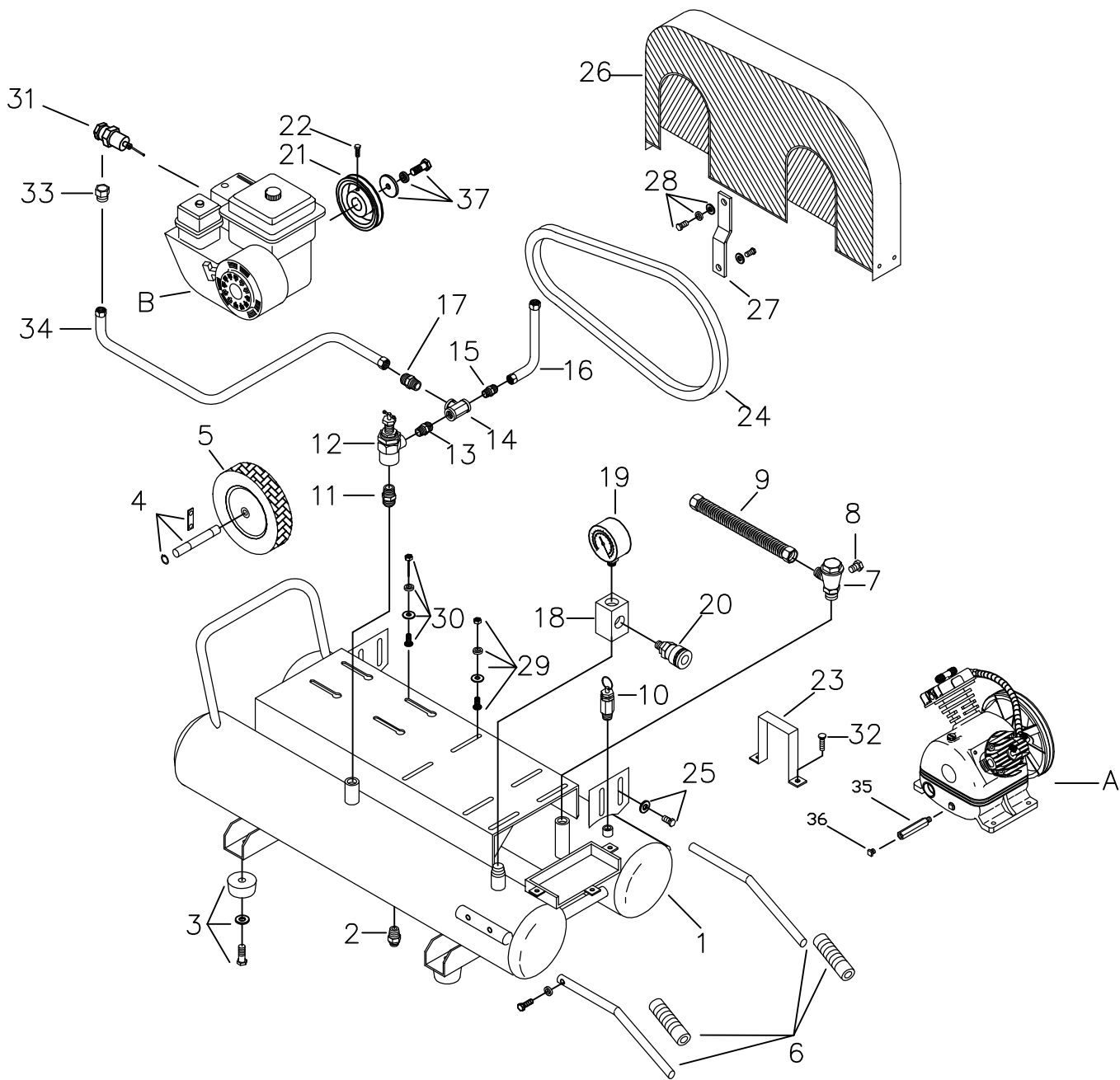


# MODEL : PUK-6008RGE



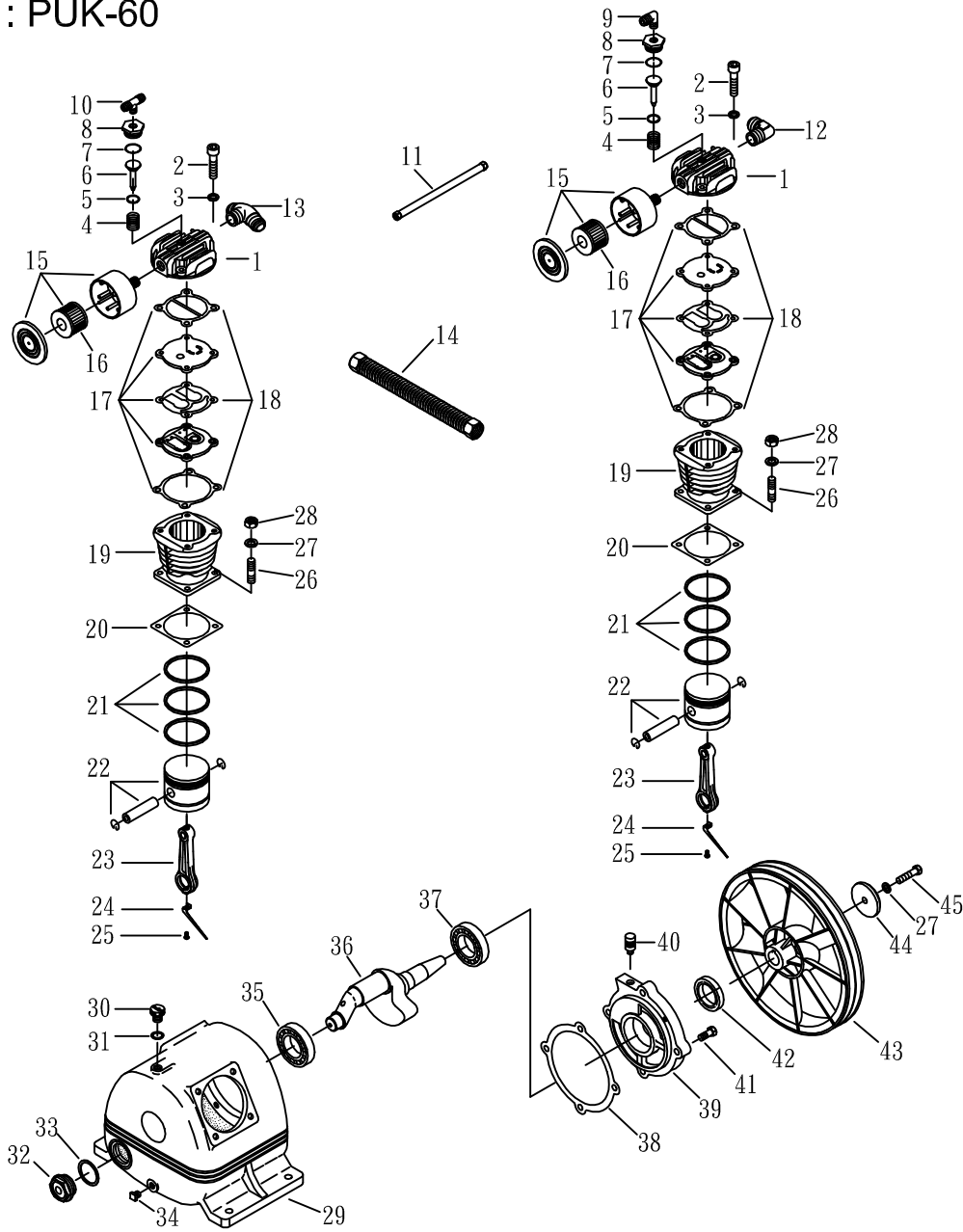
# PARTS LIST

Model: PUK-6008RGE

VER.: PI-010

REF. NO.	PART NO.	DESCRIPTION	QTY.
A	PUK-60	Bare Pump	1
B	028-60RE	Engine (Subaru Robin EX170 6HP w/ Starter)	1
1	3401386	Air receiver (tank)	1
2	2405011	Drain valve	2
3	2433015A	Rubber pad set	4
4	2418022A	Tank wheel axle	1
5	2402032B	Wheel	1
6	3432030-A	Grip set	1
7	2414025T	Check valve	1
8	2N33-001	Plug	1
9	3B2-04*440	Discharge tube set	1
10	84006009	Pressure relief valve	1
11	2N01-002	Nipple	1
12	041-PV125FN-000	Pilot valve	1
13	2N01-01N01N	Nipple	1
14	2N03-C111NF	Brass 3-way manifold	1
15	2N01-01T02HS	Nipple	1
16	3B2-02*350	Unloading tube set	1
17	2N15-C01TW02M	Nipple	1
18	2N04-C2234N	Brass 4-way manifold	1
19	2D12-25V20KL	Pressure gauge	1
20	07MS3/8M-1-C	Quick coupler	1
21	3PGF-040A1W0615	Engine pulley	1
22	2B07-SM08*16	Set screw	2
23	2B07-SM08*16	Battery Bracket	2
24	2N31-A51	V-belt (US A-50)	1
25	2B00-FM08*015W	Hex bolt set	5
26	3426013	Belt guard	1
27	3427072	Bracket	1
28	2B00-FM06*020VW	Hex bolt set	1
29	2B08-FM08*30-M	Bolt set (Pump side)	4
30	068-0516N16C5-0	Bolt (Engine side)	4
30	066-I0516-U01	Washer	4
30	066-I0516-L00	Lock Washer	4
30	070-0516N18H13	Nut	4
31	031-S090P175RC	Engine Throttle Control (Actuator)	1
32	2B00-FM5*020	Bolt	2
33	070-0108N-01	Nut fitting	1
33	070R-01N-01	Tube restraint sleeve	1
34	063-NL01X900	Tube (Pilot Valve to Engine Throttle Control)	1
35	2305002	Oil Draining Tube	1
36	2N33-001	Plug	1
37	068-0516N24H5-0	Bolt	1
37	066-I0516-L00	Lock Washer	1
37	066-I0516-F00	Fender Washer	1

MODEL : PUK-60



PARTS LIST

NO.. QC-0203

REF. NO.	DESCRIPTION	PART NO.	QTY.	REF. NO.	DESCRIPTION	PART NO.	QTY.
1	Cylinder head	3101055	2	24	Oil splasher	2317017	2
2	Hex socket head bolt	2B01-M06*040	8	25	Bolt (+)	2B02-FM5*010	2
3	Split lock washer	2B33-M06	8	26	Stud screw	2B11-001	8
4	Spring (Head unloader)	2S03-001	2	27	Split lock washer	2B33-M08	9
5	O-ring	2N52-P06V	2	28	Hex nut	2B20-FM08	8
6	Piston (Head unloader)	2113006	2	29	Crankcase	3301015	1
7	O-ring	2N52-P16*3V	2	30	Oil filling cap	2319003	1
8	Cap (Head unloader)	2B26-001	2	31	Oil filling cap gasket	2G11-005	1
9	Elbow	2N06-01T02H	1	32	Oil sight gauge	2303004	1
10	Tee	2N09-02H01T02H4	1	33	Oil sight gauge gasket	2G11-003	1
11	Tube kit	3B2-02*475	1	34	Oil draining plug	2N33-001	1
12	Elbow	2N06-04T04H	1	35	Bearing	2N35-6204	1
13	Tee	2N09-04H04T04H1	1	36	Crankshaft & counterweight	3304038	1
14	Discharge Tube Kit	3B2-04*240	1	37	Bearing	2N35-6205Z	1
15	Air filter	2140020A	2	38	Rear bearing end gasket	2G06-008	1
16	Filter element	1807 (2142013)	2	39	Rear bearing end	3311015	1
17	Inlet & Outlet valve assembly	3B13-AC07	2	40	Breather	2321002	1
18	Valve plate gasket kit	3B71-PK20	2	41	Hex bolt	2B00-SM08*020	4
19	Cylinder	3201035	2	42	Oil seal	2N50-TC24*47*07	1
20	Cylinder gasket	2G04-003	2	43	Pulley	3PBA-105A124	1
21	Piston ring kit	3B32-65	2	44	Flat washer	2B30-08*35*35	1
22	Piston kit	3B31-65	2	45	Hex bolt	2B00-SM08*035A	1
23	Rod	2315028	2				